



夹紧气缸 CPL80 Pneumatic clamp CPL80

主要特点:

- 铝制壳体
- 带曲杠原理
- 打开角度容易调节
- 检查销验证终端位置
- 多功能铁制 V 型和 H 型夹臂
- 4 种安装方式 (正面, 背面和侧面)
- 气缸缸径: 80 mm
- 2 个气源接口 G1/4"
- 电感式接口 (接口 M12x1)
- 带手动结构可选

Main characteristics:

- Aluminum flanks
- Toggle action mechanism
- Opening angle easily adjustable
- Checking pin for verifying the end position
- Versatile iron steel arms V and H
- 4 mounting areas (front, back, on the sides)
- Pneumatic cylinder bore: 80 mm
- 2 feeding ports G1/4"
- Inductive proximity switch (connection M12x1)
- Hand lever



[PDF](#)



[3D Step](#)



[INDEX](#)

索引. Index.

页码 Page	描述 Description	
1	主要特点 / Main characteristics	
2	订货举例 / Ordering example	
3 - 4	尺寸页码 Dimensional page	CPL80-V1... / CPL80-H1...
5 - 6		CPL80-V1...S / CPL80-H1...S
7 - 8		CPL80-V1CDS / CPL80-H1CDS
9 - 10		CPL80-V1CDSS / CPL80-H1CDSS
11 - 12		CPL80-V3... / CPL80-H3...
13 - 14		CPL80-V3...S / CPL80-H3...S
15 - 16		CPLM80 V1... / CPLM80 H1...
17 - 18		CPLM80 V1...S / CPLM80 H1...S
19 - 20		CPLM80 V3... / CPLM80 H3...
21 - 22		CPLM80 V3...S / CPLM80 H3...S
23	图表 / Diagrams	
24	图表 Diagrams	电感式接口 M12 M12 Inductive proximity switch
		气路图 / Pneumatic plan
25 - 26	操作说明 Operating instructions	打开角度调整 Opening angle change
26 - 27	备件 / Spare parts	
27	备注 / Notes	



订货举例.

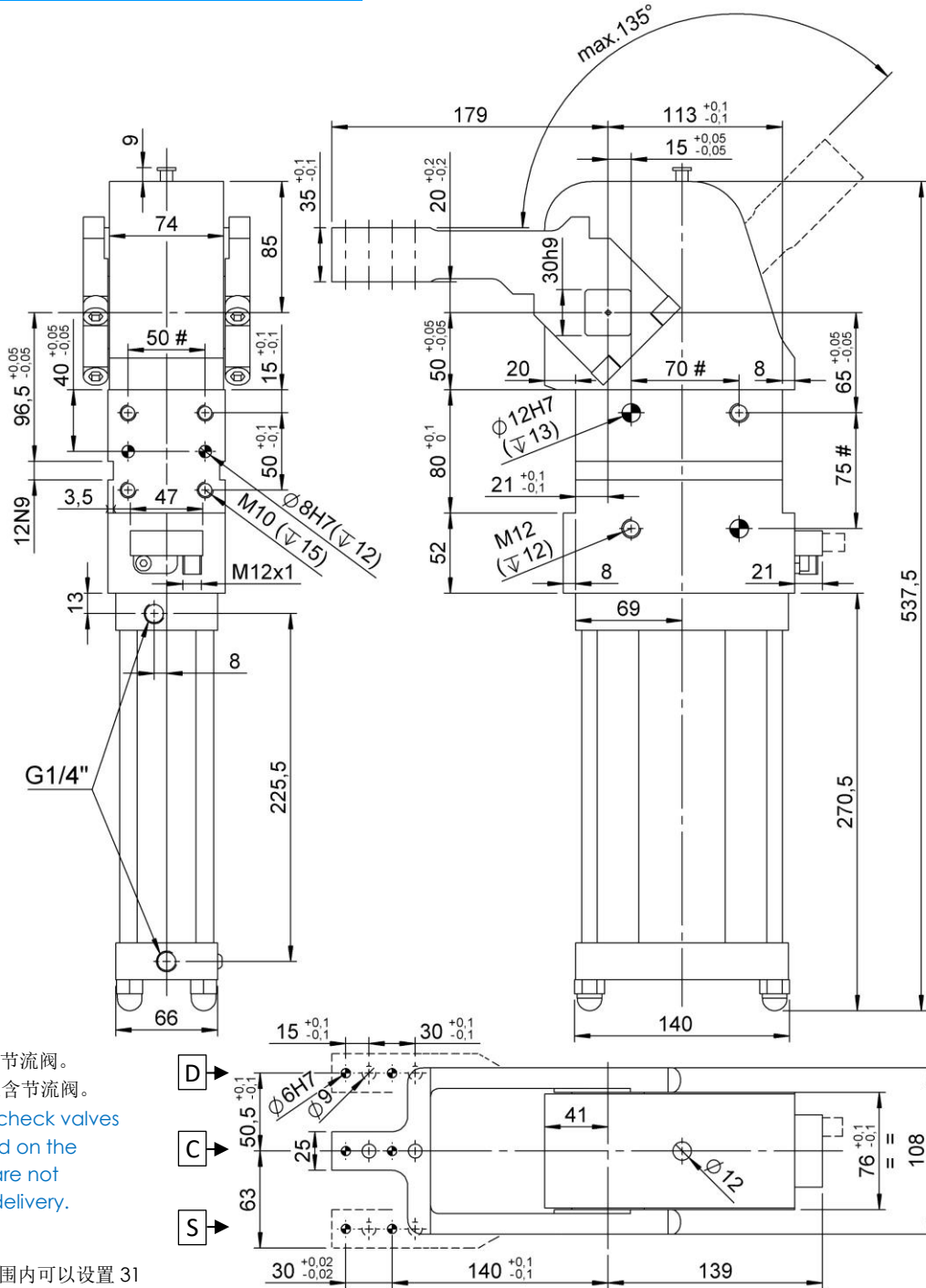
Ordering example.

CPL80	LA	V1C	I1	G	-	107																																																																
<p>产品型号和气缸缸径: Model and cylinder bore CPL80 标准夹紧气缸 CPL 缸径 Ø80mm standard clamp CPL cylinder bore Ø80mm</p> <p>CPLM80 标准夹紧气缸 CPL 带手动机构 缸径 Ø80mm standard clamp CPL with hand lever cylinder bore Ø80mm</p> 	<p>接近开关: Proximity switch: X: 无接近开关 without proximity switch</p> <p>I1: VEP 标准电感式接近开关 (0°) inductive proximity switch VEP standard (0°)</p> <p>I2: VEP 标准电感式接近开关 (90°) inductive proximity switch VEP (90°)</p> 	<p>夹臂类型: Type of arm: XXX: 无夹臂 without arm</p> <p>V1C, V1D 和 V1S (参见第 3 页) (see page 3) H1C, H1D 和 H1S (参见第 4 页) (see page 4) V1CS, V1DS 和 V1SS (参见第 5 页) (see page 5) H1CS, H1DS 和 H1SS (参见第 6 页) (see page 6) V1CDS (参见第 7 页) (see page 7) H1CDS (参见第 8 页) (see page 8) V1CDSS (参见第 9 页) (see page 9) H1CDSS (参见第 10 页) (see page 10) V3C, V3D 和 V3S (参见第 11 页) (see page 11) H3C, H3D 和 H3S (参见第 12 页) (see page 12) V3CS, V3DS 和 V3SS (参见第 13 页) (see page 13) H3CS, H3DS 和 H3SS (参见第 14 页) (see page 14)</p> <p><u>备注: 可以通过调整夹臂的安装方向把夹臂 V 改成 H.</u> <u>NOTE: It's possible to transform the clamp type V... into the type H... simply changing the arm position.</u></p> 		<p>手柄位置: (仅用于 CPLM...)</p> <p>Hand lever position: (specify only for CPLM... type)</p> <p>LX: 手柄原配位置 lever arrangement</p> <p>LA: 手柄在左侧 left lever</p> <p>LB: 手柄在右侧 right lever</p> 	<p>气源接口类型: Feeding ports type: G: G 1/4" 接口 ports type G 1/4"</p> <p>N: 1/4" NPT 接口 ports type 1/4" NPT</p> 																																																																	
<p>打开角度调整: Adjustable opening angle:</p> <table border="1" style="width: 100%; border-collapse: collapse;"> <thead> <tr style="background-color: #0070C0; color: white;"> <th rowspan="2">型号 Type</th> <th colspan="3">CPL80</th> <th colspan="3">CPLM80</th> </tr> <tr style="background-color: #0070C0; color: white;"> <th>从 from</th> <th>至 to</th> <th>标准</th> <th>从 from</th> <th>至 to</th> <th>标准</th> </tr> </thead> <tbody> <tr> <td>V1...</td> <td rowspan="2">3°</td> <td rowspan="2">135°</td> <td rowspan="2">122°</td> <td>3°</td> <td rowspan="2">122°</td> <td rowspan="2">122°</td> </tr> <tr> <td>V3...</td> <td>3°</td> </tr> <tr> <td>H1...</td> <td>3°</td> <td>103°</td> <td>103°</td> <td>3°</td> <td>103°</td> <td>103°</td> </tr> <tr> <td>H3...</td> <td>3°</td> <td>117°</td> <td>117°</td> <td>3°</td> <td>117°</td> <td>117°</td> </tr> <tr> <td>V1...S</td> <td>3°</td> <td>13°</td> <td>13°</td> <td>3°</td> <td>13°</td> <td>13°</td> </tr> <tr> <td>V3...S</td> <td>3°</td> <td>29°</td> <td>29°</td> <td>3°</td> <td>29°</td> <td>29°</td> </tr> <tr> <td>H1...S</td> <td>3°</td> <td>72°</td> <td>72°</td> <td>3°</td> <td>72°</td> <td>72°</td> </tr> <tr> <td>H3...S</td> <td>3°</td> <td>58°</td> <td>58°</td> <td>3°</td> <td>58°</td> <td>58°</td> </tr> </tbody> </table> <p style="font-size: small;">如未标明, 气缸将按标准角度供货。 If not indicated, the clamp will be provided with the standard opening angle.</p>							型号 Type	CPL80			CPLM80			从 from	至 to	标准	从 from	至 to	标准	V1...	3°	135°	122°	3°	122°	122°	V3...	3°	H1...	3°	103°	103°	3°	103°	103°	H3...	3°	117°	117°	3°	117°	117°	V1...S	3°	13°	13°	3°	13°	13°	V3...S	3°	29°	29°	3°	29°	29°	H1...S	3°	72°	72°	3°	72°	72°	H3...S	3°	58°	58°	3°	58°	58°
型号 Type	CPL80			CPLM80																																																																		
	从 from	至 to	标准	从 from	至 to	标准																																																																
V1...	3°	135°	122°	3°	122°	122°																																																																
V3...				3°																																																																		
H1...	3°	103°	103°	3°	103°	103°																																																																
H3...	3°	117°	117°	3°	117°	117°																																																																
V1...S	3°	13°	13°	3°	13°	13°																																																																
V3...S	3°	29°	29°	3°	29°	29°																																																																
H1...S	3°	72°	72°	3°	72°	72°																																																																
H3...S	3°	58°	58°	3°	58°	58°																																																																



CPL80 V1...

夹紧气缸, D.80, 打开角度可调, 夹臂垂直安装, 高度 20
Clamp, D.50, Vario Op. Angle, Vertical arm, Offset 20



气缸外部必须安装节流阀。
VEP 供应气缸不包含节流阀。
External throttle check valves must be provided on the assembly. They are not included in the delivery.

标准打开角度：
在 3° -135°可调范围内可以设置 31 个角度位置。

Standard opening angles:
settable in 31 different positions in a range between 3° and 135°.

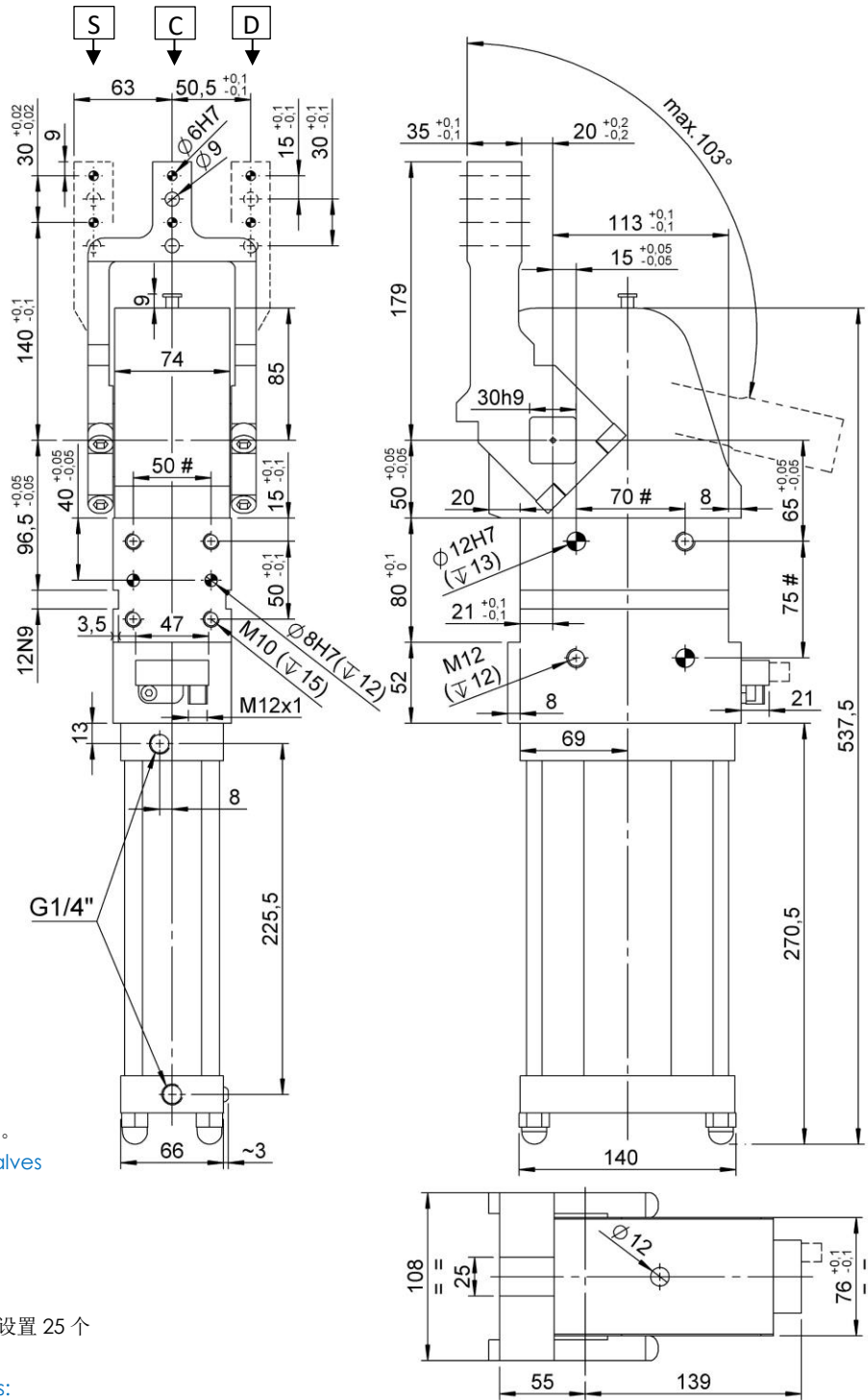
公差: 定位销孔 ± 0.02 , 螺纹孔 ± 0.1
Tolerances: dowel holes ± 0.02 , screw holes ± 0.1

类型 Type	缸径 Cylinder bore	保持力 Holding moment	重量 Weight	工作气压 Working pressure	最大夹紧扭矩 Clamping max. torque (5 bar)	最大耗气量 Max. air consumption (5 bar)
	[mm]	[Nm]	[Kg]	[bar]	[Nm]	[l]
CPL80 V1...	80	2500	~ 14	4 - 8	1000	7,9



CPL80 H1...

夹紧气缸, D.80, 打开角度可调, 夹臂水平安装, 高度 20
Clamp, D.80, Vario Op. Angle, Horizontal arm, Offset 20



气缸外部必须安装节流阀。
VEP 供应气缸不包含节流阀。
External throttle check valves must be provided on the assembly. They are not included in the delivery.

标准打开角度：
在 3° - 103° 可调范围内可以设置 25 个角度位置。
Standard opening angles:
settable in 25 different positions in a range between 3° and 103°.

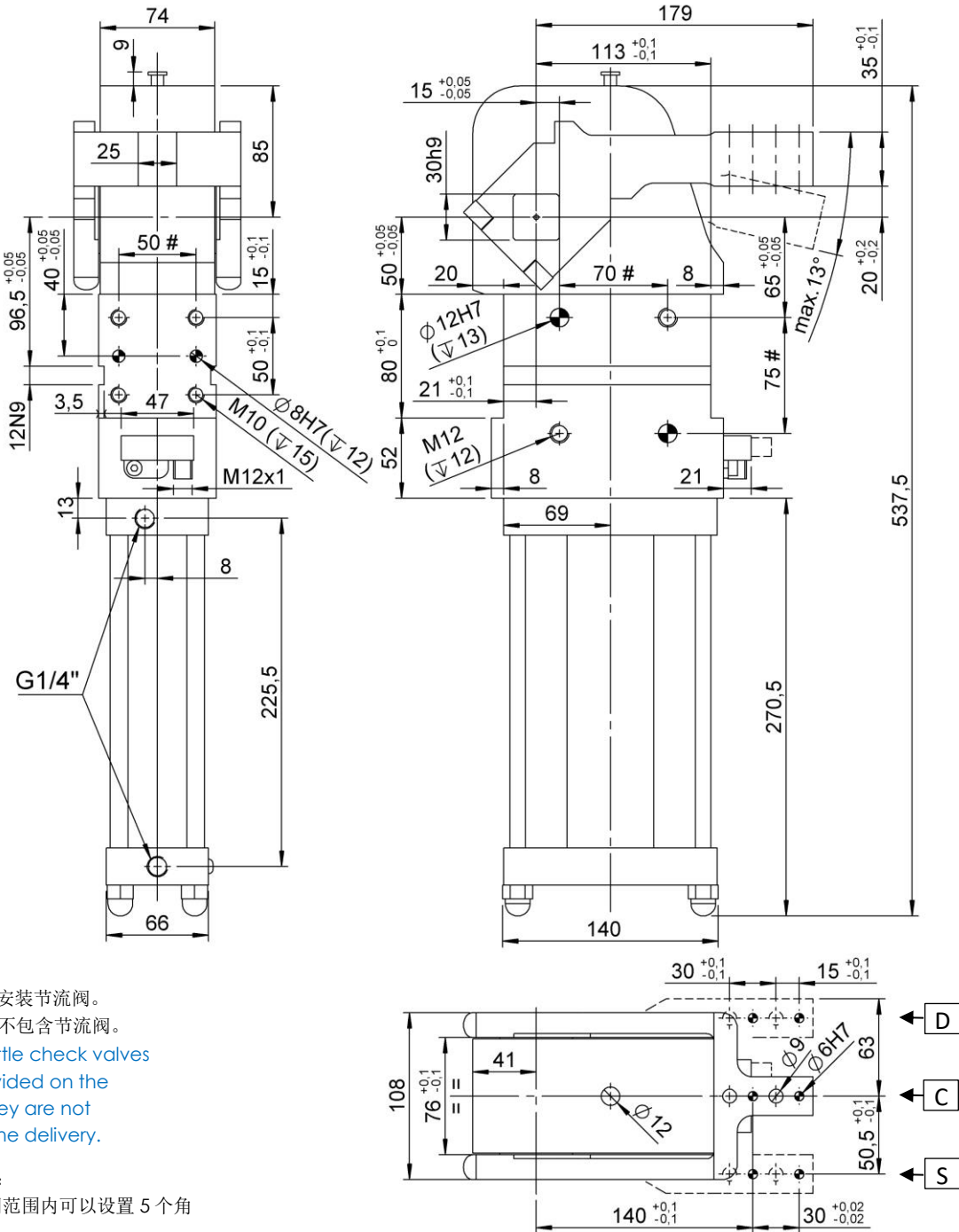
公差: 定位销孔 ± 0.02 , 螺纹孔 ± 0.1
Tolerances: dowel holes ± 0.02 , screw holes ± 0.1

类型 Type	缸径 Cylinder bore	保持力 Holding moment	重量 Weight	工作气压 Working pressure	最大夹紧扭矩 Clamping max. torque (5 bar)	最大耗气量 Max. air consumption (5 bar)
	[mm]	[Nm]	[Kg]	[bar]	[Nm]	[l]
CPL80 H1...	80	2500	~ 14	4 - 8	1000	7,1



CPL80 V1...S

夹紧气缸, D.80, 打开角度可调, 夹臂对称垂直安装, 高度 20
Clamp, D.80, Vario Op. Angle, Vertical symmetric arm, Offset 20



气缸外部必须安装节流阀。
VEP 供应气缸不包含节流阀。
External throttle check valves must be provided on the assembly. They are not included in the delivery.

标准打开角度：
在 3°-13°可调范围内可以设置 5 个角度位置。

Standard opening angles:
settable in 5 different positions in a range between 3° and 13°.

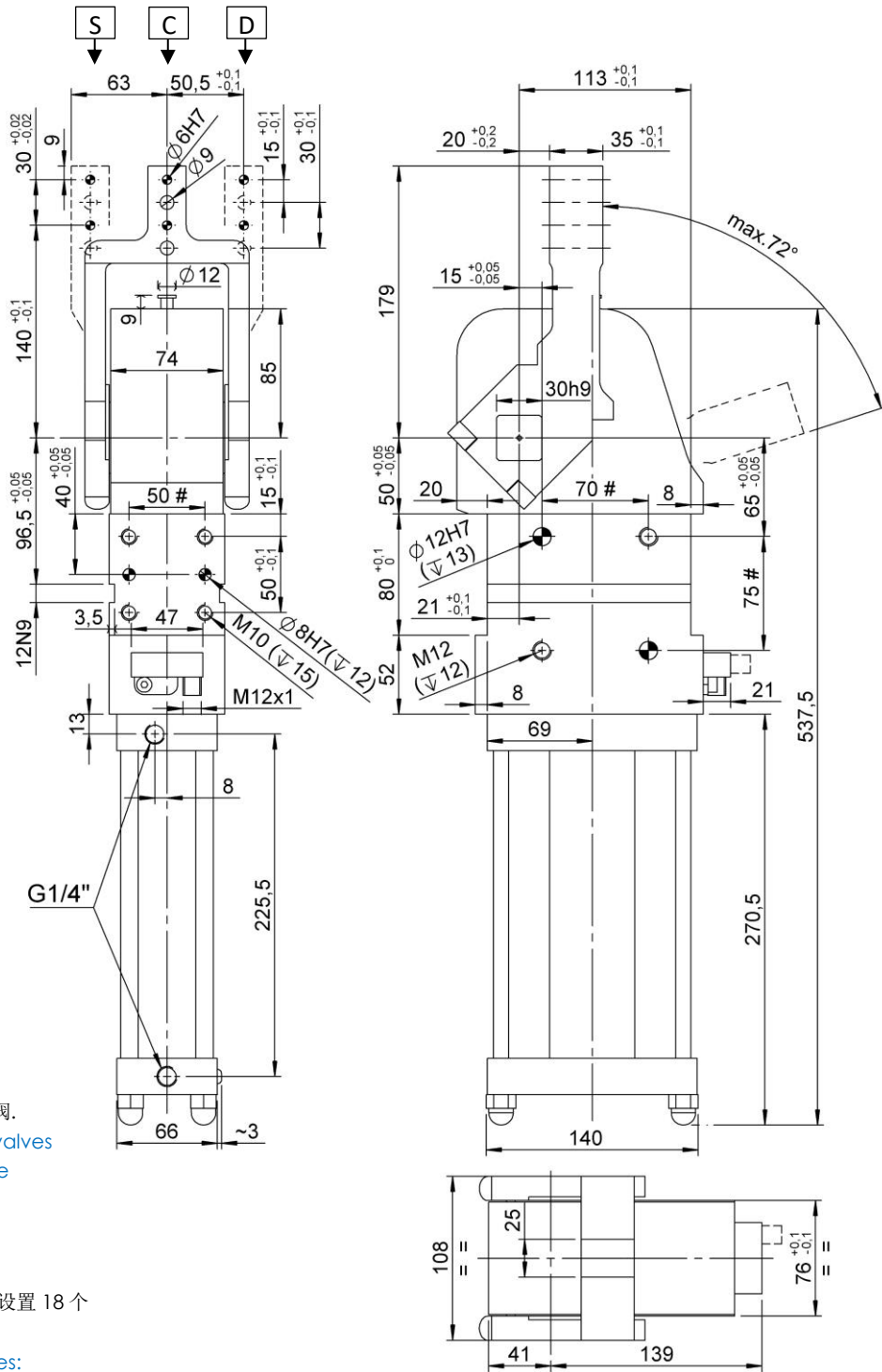
公差: 定位销孔 ± 0.02 , 螺纹孔 ± 0.1
Tolerances: dowel holes ± 0.02 , screw holes ± 0.1

类型 Type	缸径 Cylinder bore	保持力 Holding moment	重量 Weight	工作气压 Working pressure	最大夹紧扭矩 Clamping max. torque (5 bar)	最大耗气量 Max. air consumption (5 bar)
	[mm]	[Nm]	[Kg]	[bar]	[Nm]	[l]
CPL80 V1...S	80	2500	~ 14	4-8	1000	4,7



CPL80 H1...S

夹紧气缸, D.80, 打开角度可调, 夹臂水平对称安装, 高度 20
Clamp, D.80, Vario Op. Angle, Horizontal symmetric arm, Offset 20



气缸外部必须安装节流阀。
VEP 供应气缸不包含节流阀。
External throttle check valves must be provided on the assembly. They are not included in the delivery.

标准打开角度：
在 3° -72°可调范围内可以设置 18 个角度位置。
Standard opening angles: settable in 18 different positions in a range between 3° and 72°.

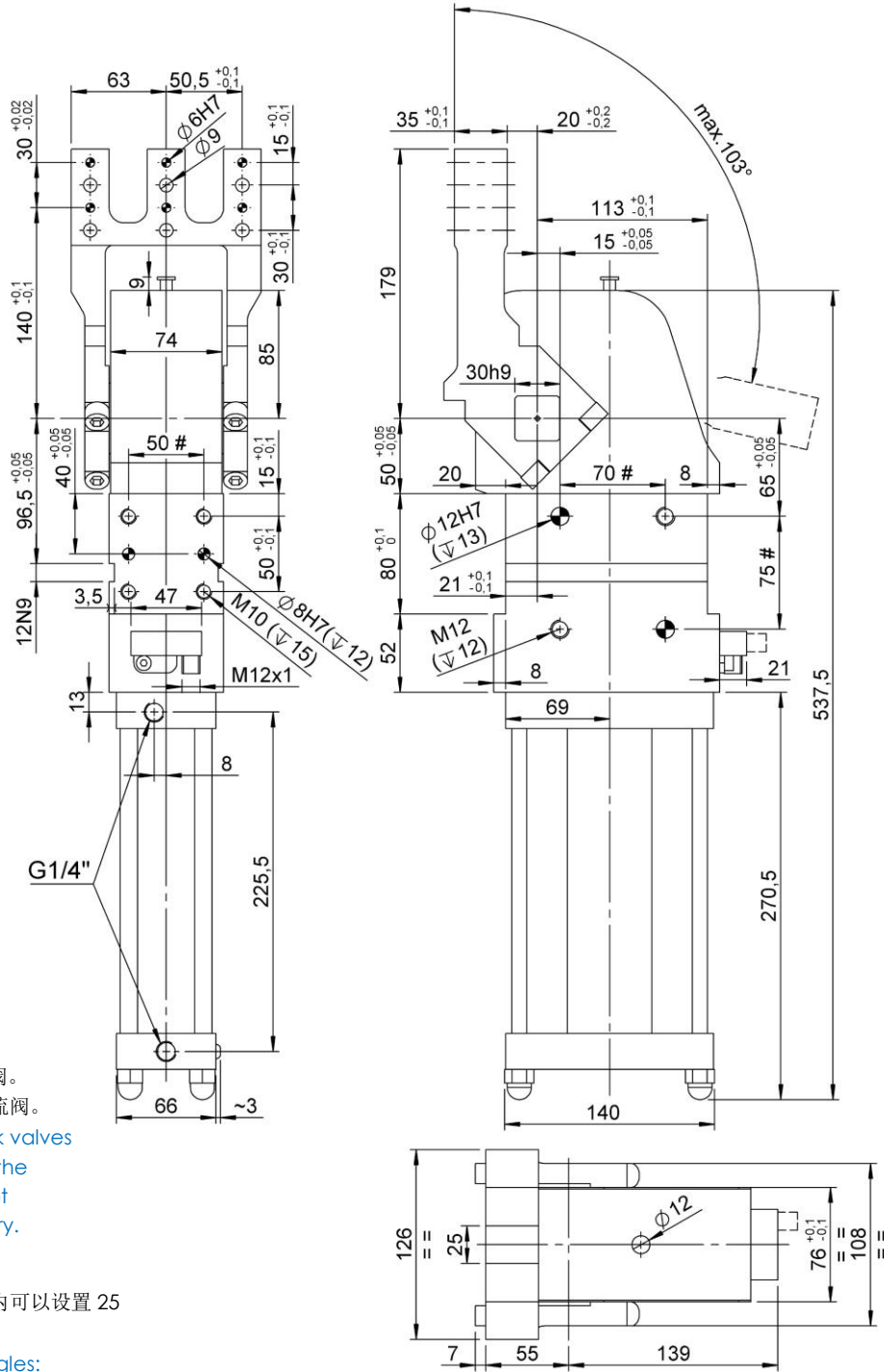
公差: 定位销孔 ± 0.02 , 螺纹孔 ± 0.1
Tolerances: dowel holes ± 0.02 , screw holes ± 0.1

类型 Type	缸径 Cylinder bore	保持力 Holding moment	重量 Weight	工作压力 Working pressure	最大夹紧扭矩 Clamping max. torque (5 bar)	最大耗气量 Max. air consumption (5 bar)
	[mm]	[Nm]	[Kg]	[bar]	[Nm]	[l]
CPL80 H1...S	80	2500	~ 14	4 - 8	1000	6,3



CPL80 H1CDS

夹紧气缸, D.80, 打开角度, 三指夹臂水平安装, 高度 20
Clamp, D.80, Vario Op. Angle, Horizontal CDS arm, Offset 20



气缸外部必须安装节流阀。
VEP 供应气缸不包含节流阀。

External throttle check valves must be provided on the assembly. They are not included in the delivery.

标准打开角度:

在 3° - 103° 可调范围内可以设置 25 个角度位置。

Standard opening angles:

settable in 25 different positions in a range between 3° and 103°.

公差: 定位销孔 ± 0.02 , 螺纹孔 ± 0.1

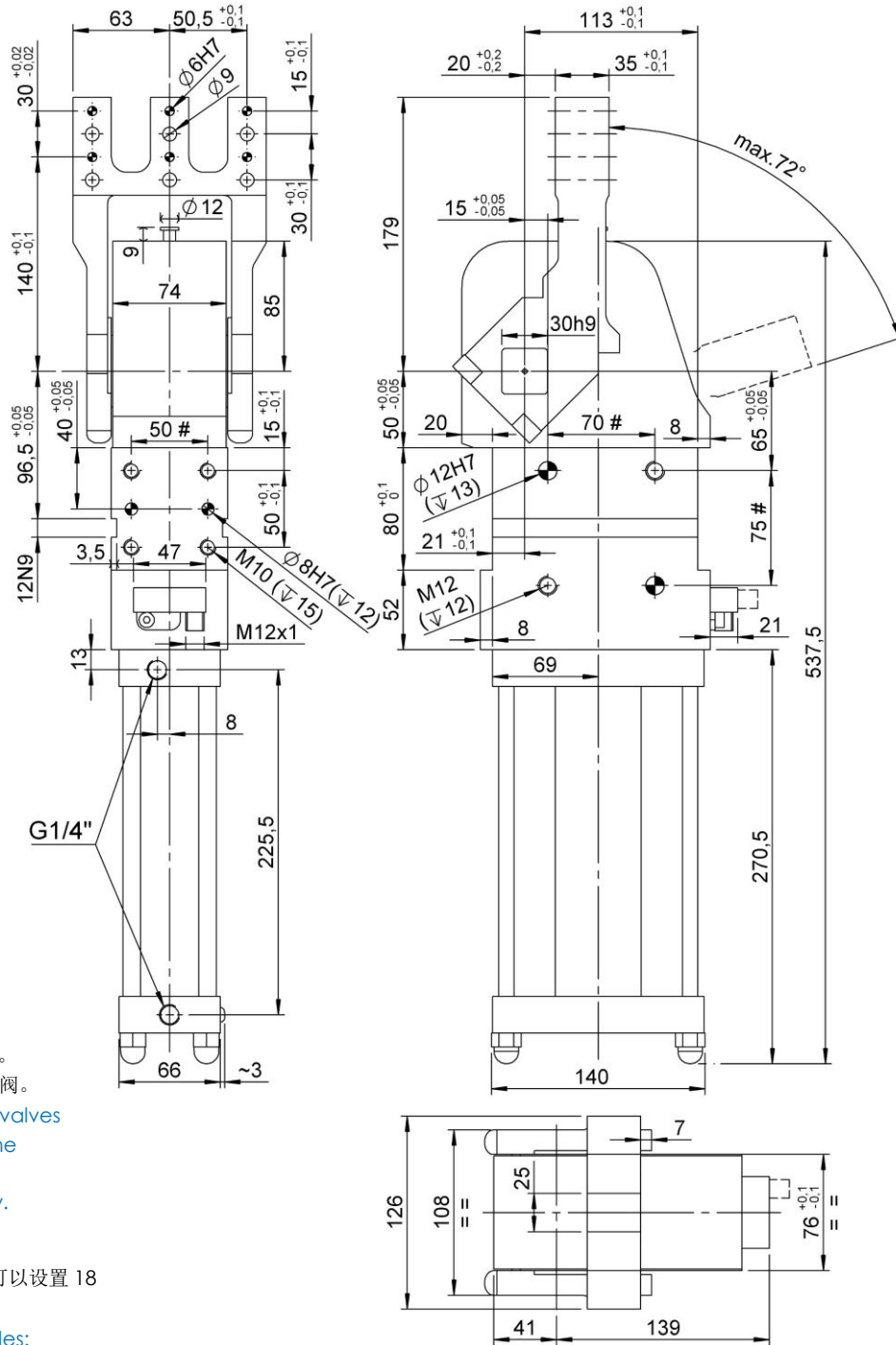
Tolerances: dowel holes ± 0.02 , screw holes ± 0.1

类型 Type	缸径 Cylinder bore	保持力 Holding moment	重量 Weight	工作气压 Working pressure	最大夹紧扭矩 Clamping max. torque (5 bar)	最大耗气量 Max. air consumption (5 bar)
	[mm]	[Nm]	[Kg]	[bar]	[Nm]	[l]
CPL80 H1CDS	80	2500	~ 15	4 - 8	1000	7,1



CPL80 H1CDSS

夹紧气缸, D.80, 打开角度可调, 三指夹臂水平对称安装., 高度 20
 Clamp, D.80, Vario Op. Angle, Horizontal CDS symm. arm, Offset 20



气缸外部必须安装节流阀。
 VEP 供应气缸不包含节流阀。

External throttle check valves must be provided on the assembly. They are not included in the delivery.

标准打开角度：
 在 3° - 72° 可调范围内可以设置 18 个角度位置。

Standard opening angles:
 settable in 18 different positions in a range between 3° and 72°.

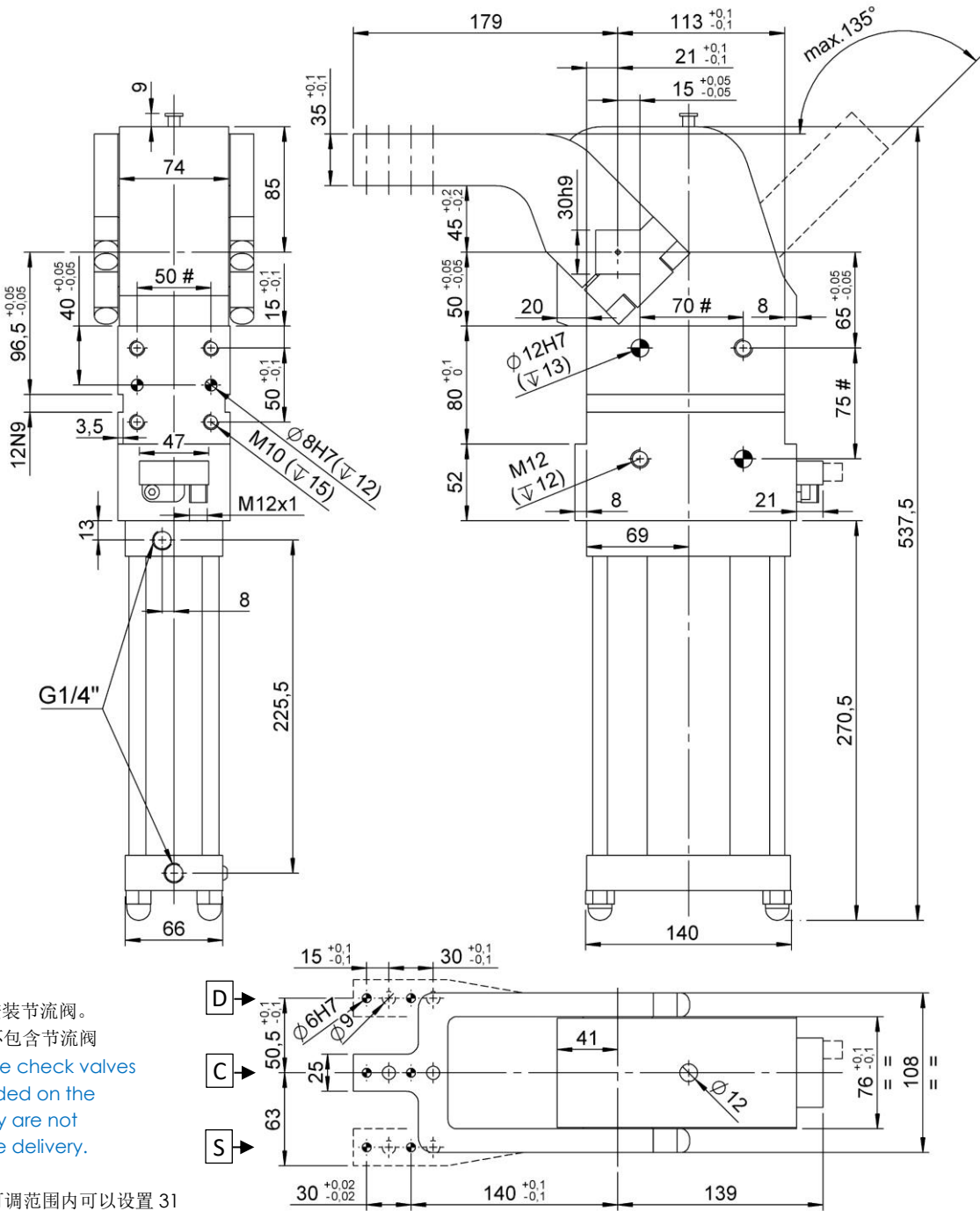
公差: 定位销孔 ± 0.02 , 螺纹孔 ± 0.1
 # Tolerances: dowel holes ± 0.02 , screw holes ± 0.1

类型 Type	缸径 Cylinder bore	保持力 Holding moment	重量 Weight	工作气压 Working pressure	最大夹紧扭矩 Clamping max. torque (5 bar)	最大耗气量 Max. air consumption (5 bar)
	[mm]	[Nm]	[Kg]	[bar]	[Nm]	[l]
CPL80 H1CDSS	80	2500	~ 15	4 - 8	1000	6,3



CPL80 V3...

夹紧气缸, D.80, 打开角度可调, 夹臂垂直安装, 高度 45
Clamp, D.80, Vario Op. Angle, Vertical arm, Offset 45



气缸外部必须安装节流阀。
VEP 供应气缸不包含节流阀

External throttle check valves must be provided on the assembly. They are not included in the delivery.

标准打开角度:

在 3° - 135° 可调范围内可以设置 31 个角度位置。

Standard opening angles:

settable in 31 different positions in a range between 3° and 135°.

公差: 定位销孔 ± 0.02 , 螺纹孔 ± 0.1

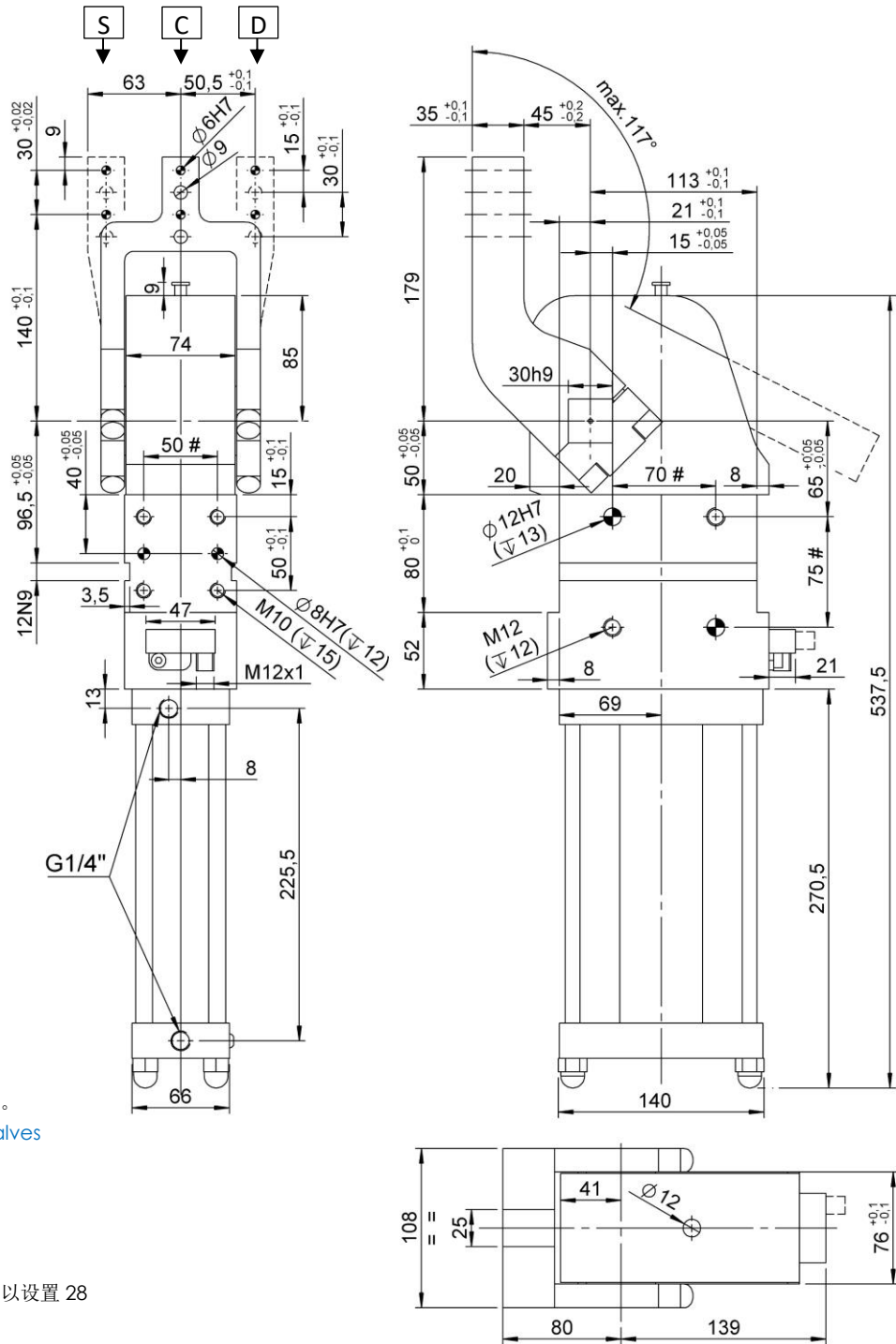
Tolerances: dowel holes ± 0.02 , screw holes ± 0.1

类型 Type	缸径 Cylinder bore	保持力 Holding moment	重量 Weight	工作气压 Working pressure	最大夹紧扭矩 Clamping max. torque (5 bar)	最大耗气量 Max. air consumption (5 bar)
	[mm]	[Nm]	[Kg]	[bar]	[Nm]	[l]
CPL80 V3...	80	2500	~ 14,5	4 - 8	1000	7,9



CPL80 H3...

夹紧气缸, D.80, 打开角度可调, 夹臂水平安装, 高度 45
Clamp, D.80, Vario Op. Angle, Horizontal arm, Offset 45



气缸外部必须安装节流阀。
VEP 供应气缸不包含节流阀。

External throttle check valves must be provided on the assembly. They are not included in the delivery.

标准打开角度：
在 3° - 117° 可调范围内可以设置 28 个角度位置。

Standard opening angles:
settable in 28 different positions in a range between 3° and 117°.

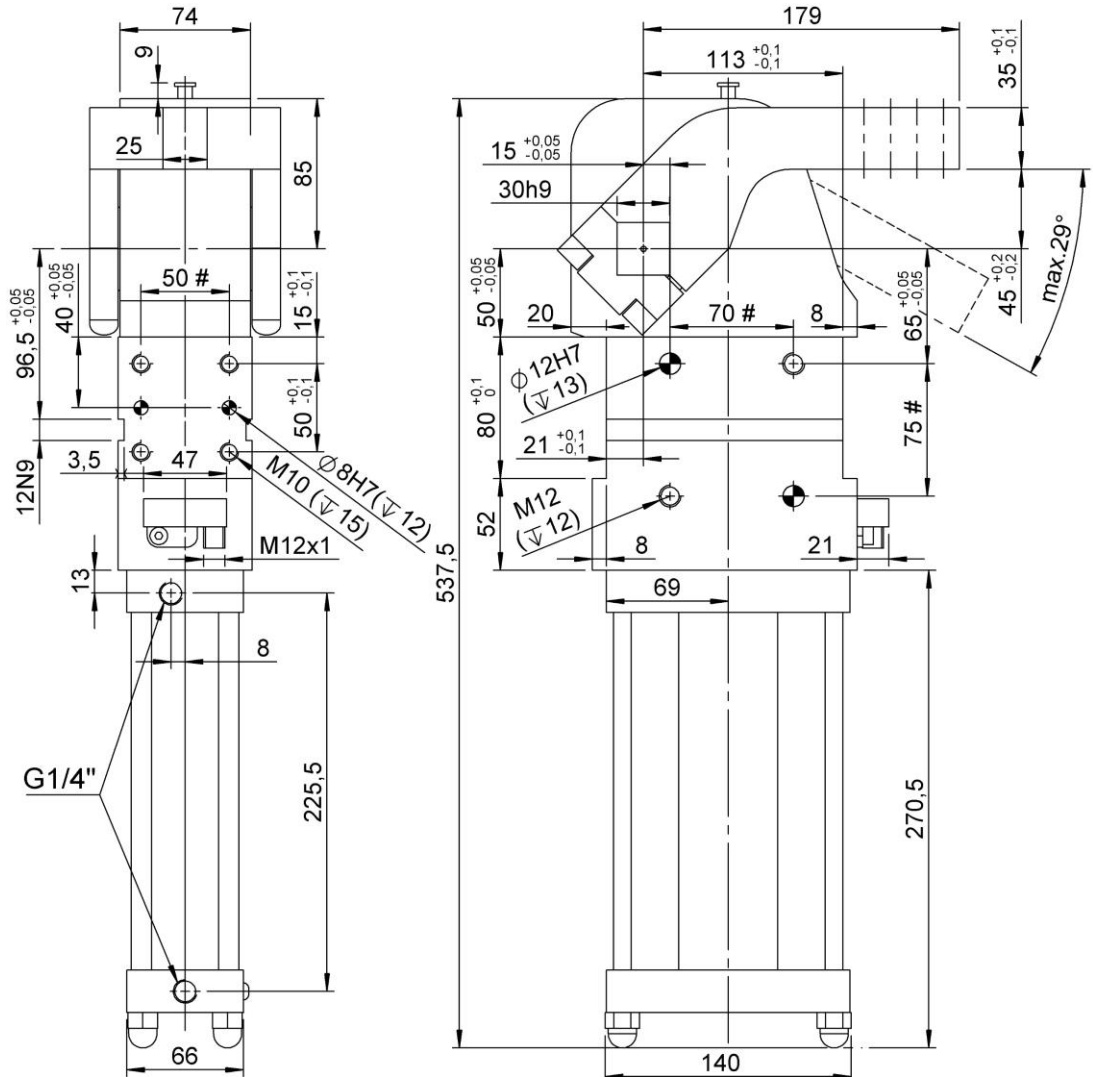
公差: 定位销孔 ± 0.02 , 螺纹孔 ± 0.1
Tolerances: dowel holes ± 0.02 , screw holes ± 0.1

类型 Type	缸径 Cylinder bore	保持力 Holding moment	重量 Weight	工作气压 Working pressure	最大夹紧扭矩 Clamping max. torque (5 bar)	最大耗气量 Max. air consumption (5 bar)
	[mm]	[Nm]	[Kg]	[bar]	[Nm]	[l]
CPL80 H3...	80	2500	~ 14,5	4 - 8	1000	7,5



CPL80 V3...S

夹紧气缸, D.80, 打开角度可调, 夹臂垂直对称安装, 高度 45
Clamp, D.80, Vario Op. Angle, Vertical symmetric arm, Offset 45



气缸外部必须安装节流阀。
VEP 供应气缸不包含节流阀。
External throttle check valves must be provided on the assembly. They are not included in the delivery.

标准打开角度：
在 3° - 29° 可调范围内可以设置 7 个角度位置。

Standard opening angles:
settable in 7 different positions in a range between 3° and 29°.

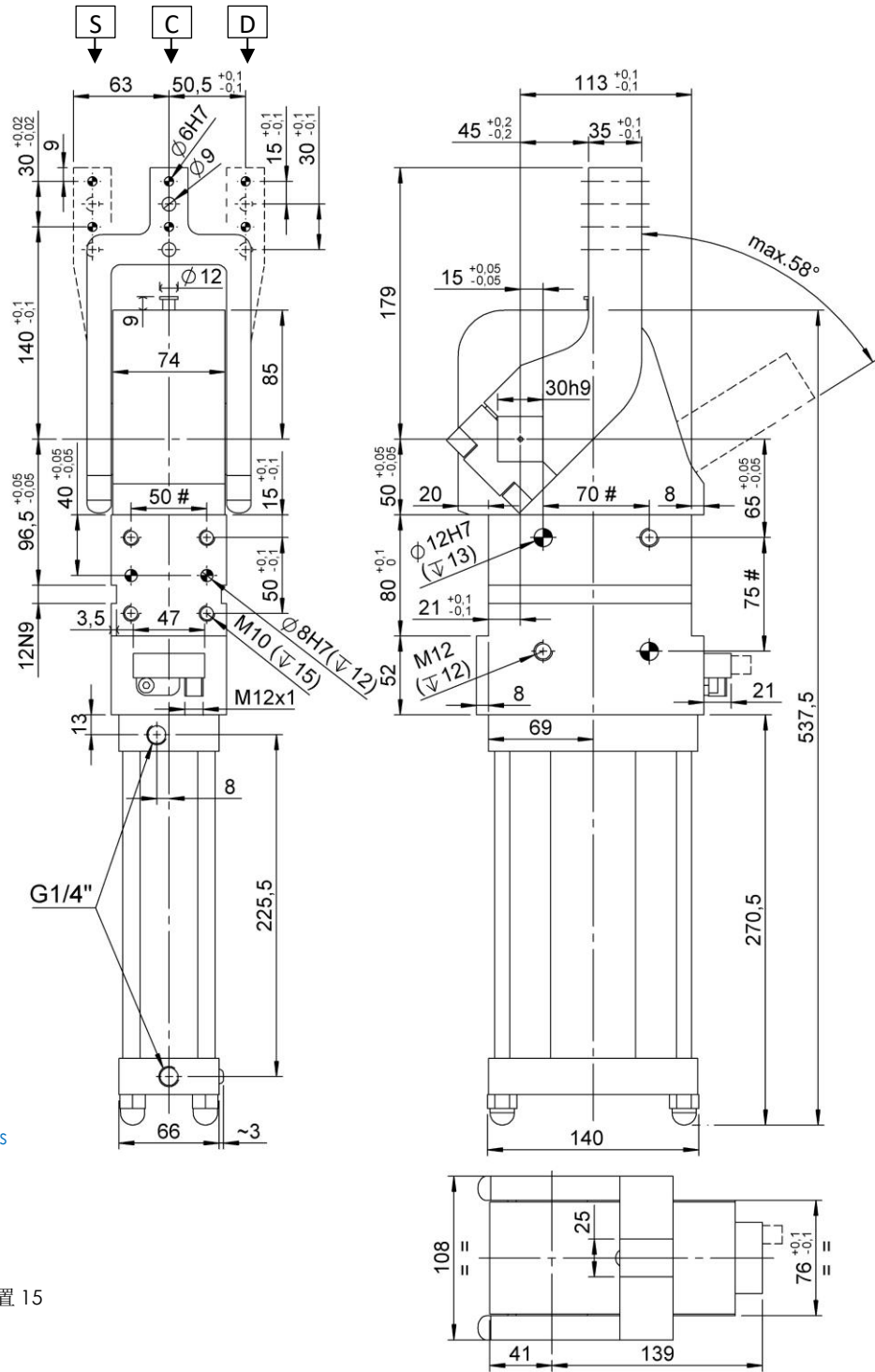
公差: 定位销孔 ± 0.02 , 螺纹孔 ± 0.1
Tolerances: dowel holes ± 0.02 , screw holes ± 0.1

类型 Type	缸径 Cylinder bore	保持力 Holding moment	重量 Weight	工作气压 Working pressure	最大夹紧扭矩 Clamping max. torque (5 bar)	耗气量 Air consumption (5 bar)
	[mm]	[Nm]	[Kg]	[bar]	[Nm]	[l]
CPL80 V3...S	80	2500	~ 14,5	4 - 8	1000	5,2



CPL80 H3...S

夹紧气缸, D.80, 打开角度可调, 夹臂水平对称安装, 高度 45
Clamp, D.80, Vario Op. Angle, Horizontal symmetric arm, Offset 45



气缸外部必须安装节流阀。
VEP 供应气缸不包含节流阀。
External throttle check valves must be provided on the assembly. They are not included in the delivery.

标准打开角度：
在 3° - 58° 可调范围内可以设置 15 个角度位置。
Standard opening angles: settable in 15 different positions in a range between 3° and 58°.

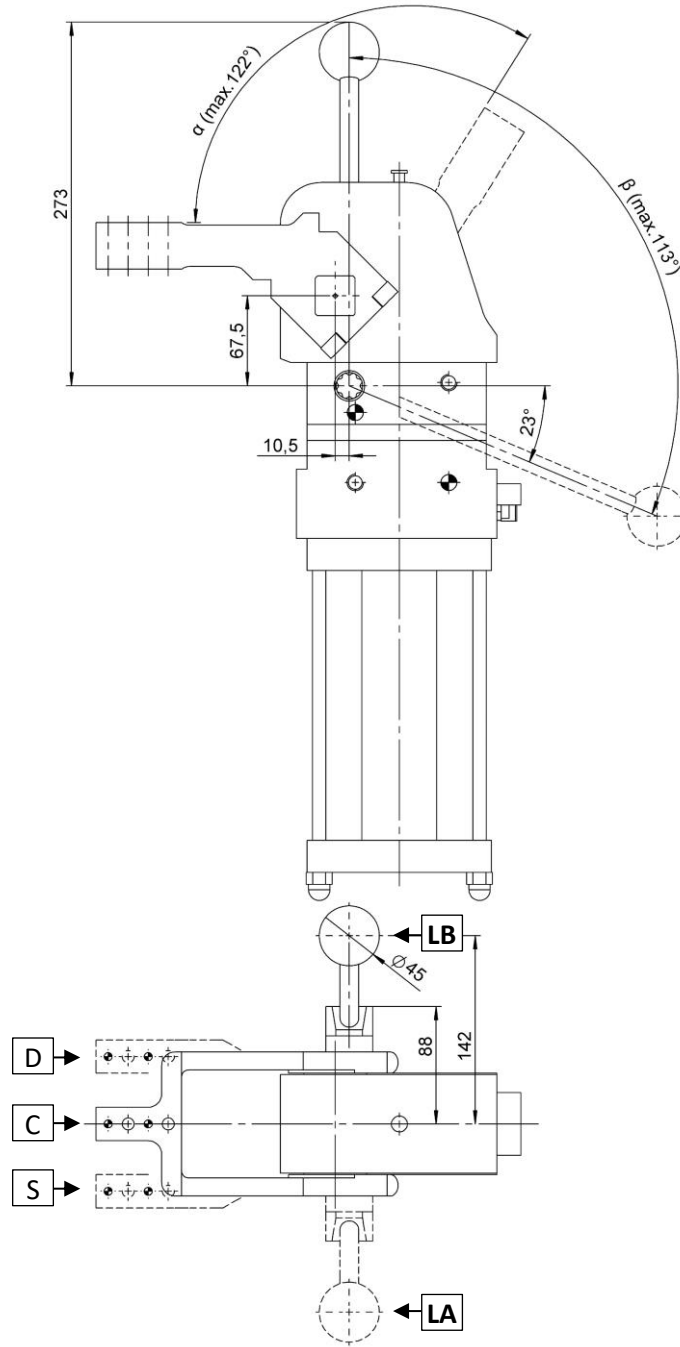
公差: 定位销孔 ± 0.02 , 螺纹孔 ± 0.1
Tolerances: dowel holes ± 0.02 , screw holes ± 0.1

类型 Type	缸径 Cylinder bore	保持力 Holding moment	重量 Weight	工作气压 Working pressure	最大夹紧扭矩 Clamping max. torque (5 bar)	耗气量 Air consumption (5 bar)
	[mm]	[Nm]	[Kg]	[bar]	[Nm]	[l]
CPL80 H3...S	80	2500	~ 14,5	4 - 8	1000	5,9



CPLM80L...V1...

夹紧气缸, D.80, 打开角度可调, 带手动机构, 夹臂垂直安装, 高度 20
Clamp, D.80, Vario Op. Angle, Hand Lever, Vert. arm, Offset 20



α	16°	29°	43°	58°	77°	90°	107°	122°
β	37°	46°	55°	64°	76°	86°	100°	113°

手柄角度控制按 22,5° 一格调整

Manual control adjustable in steps of 22,5°

公差: 定位销孔 ± 0.02 , 螺纹孔 ± 0.1

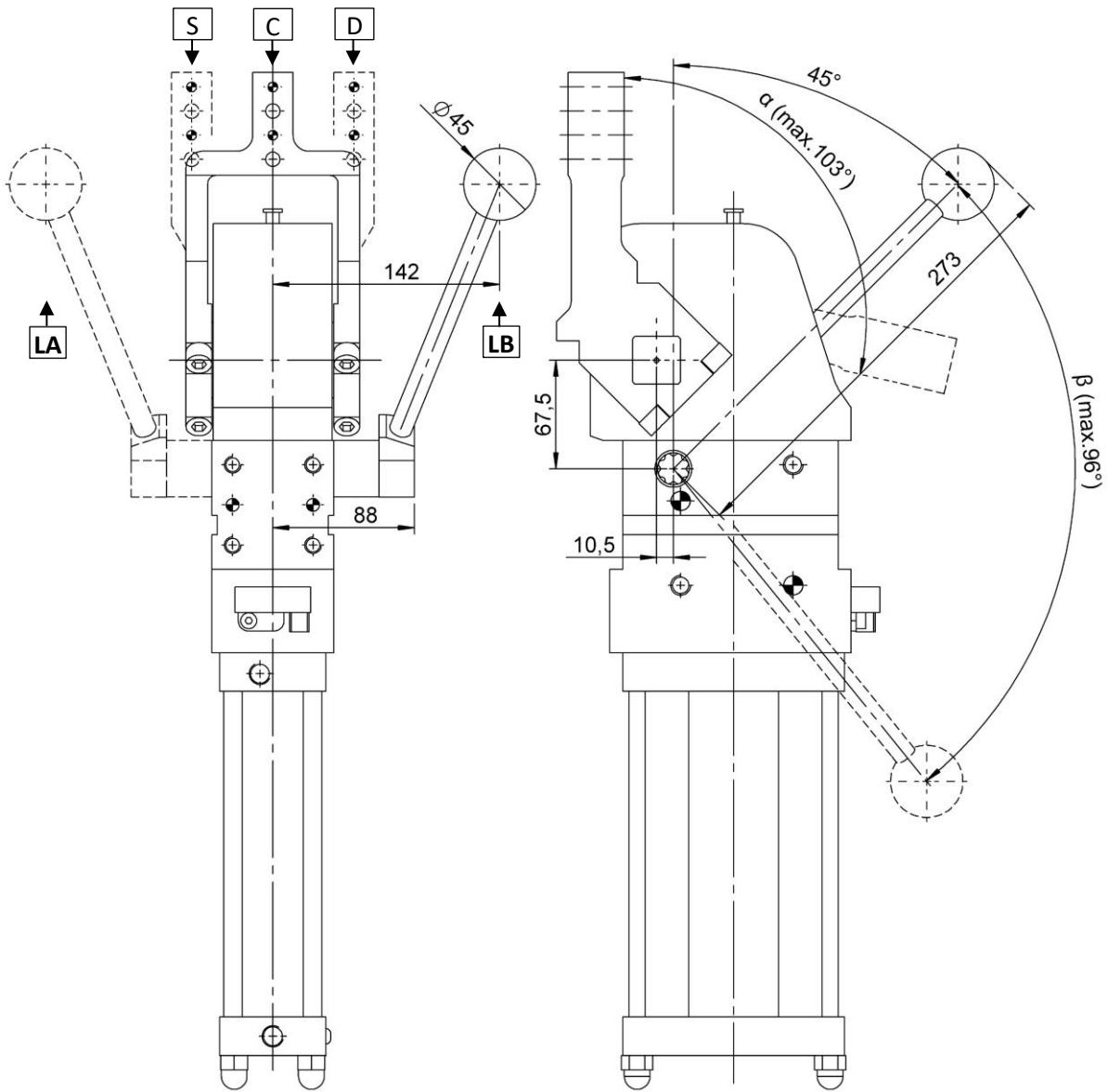
Tolerances: dowel holes ± 0.02 , screw holes ± 0.1

类型 Type	缸径 Cylinder bore	保持力 Holding moment	重量 Weight	工作气压 Working pressure	最大手动推力 Max. manual force
	[mm]	[Nm]	[Kg]	[bar]	[N]
CPLM80L...V1...	80	2500	~ 16	4 - 8	200



CPLM80L...H1...

夹紧气缸, D.80, 打开角度可调, 带手动机构, 夹臂水平安装, 高度 20
 Clamp, D.80, Vario Op. Angle, Hand Lever, Horiz. Arm, Offset 20



α	16°	29°	43°	58°	77°	90°	103°
β	37°	46°	55°	64°	76°	86°	96°

手柄角度控制按 22,5° 一格调整

Manual control adjustable in steps of 22,5°

公差: 定位销孔 ± 0.02 , 螺纹孔 ± 0.1

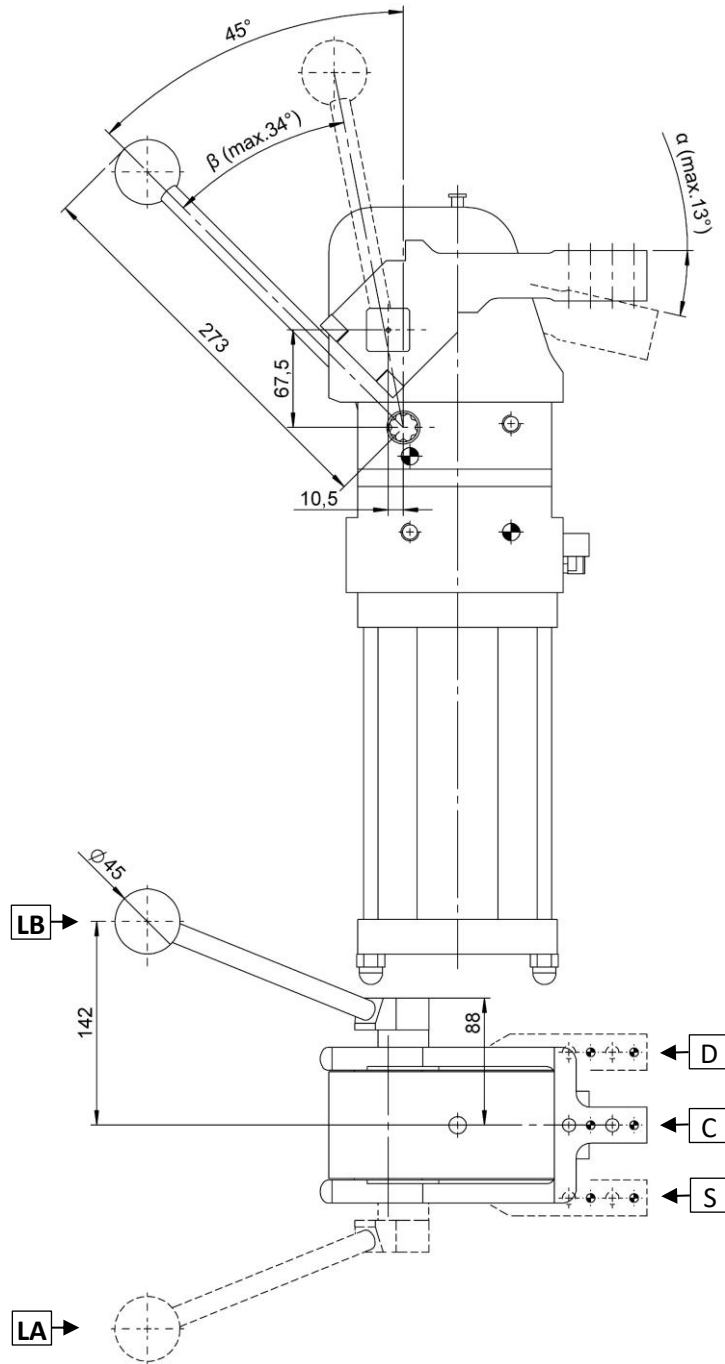
Tolerances: dowel holes ± 0.02 , screw holes ± 0.1

类型 Type	缸径 Cylinder bore	保持力 Holding moment	重量 Weight	工作气压 Working pressure	最大手动推力 Max. manual force
	[mm]	[Nm]	[Kg]	[bar]	[N]
CPLM80L...H1...	80	2500	~ 16	4 - 8	200



CPLM80L...V1...S

夹紧气缸, D.80, 打开角度可调, 带手动机构, 夹臂垂直对称安装, 高度 20
Clamp, D.80, Vario Op. Angle, Hand Lever, Vert. Sym., Offset 20



α	13°
β	34°

手柄角度控制按 22,5° 一格调整

Manual control adjustable in steps of 22,5°

公差: 定位销孔 ± 0.02 , 螺纹孔 ± 0.1

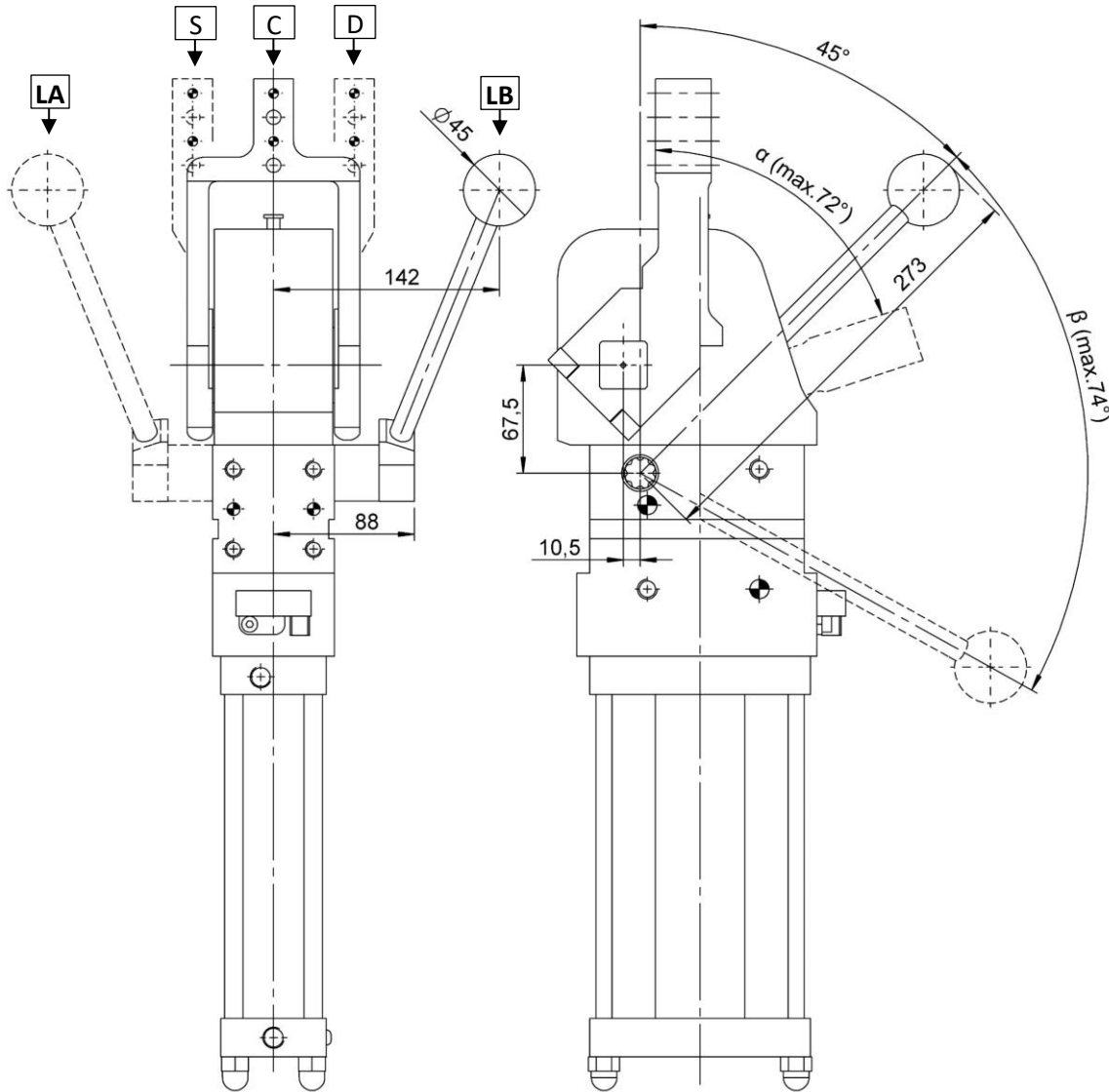
Tolerances: dowel holes ± 0.02 , screw holes ± 0.1

类型 Type	缸径 Cylinder bore	保持力 Holding moment	重量 Weight	工作气压 Working pressure	最大手动推力 Max. manual force
	[mm]	[Nm]	[Kg]	[bar]	[N]
CPLM80L...V1...S	80	2500	~ 16	4 - 8	200



CPLM80L...H1...S

夹紧气缸, D.80, 打开角度可调, 带手动机构, 夹臂水平对称安装, 高度 20
 Clamp, D.80, Vario Op. Angle, Hand Lever, Horiz. Sym., Offset 20



α	16°	30°	46°	58°	72°
β	37°	47°	57°	63°	74°

手柄角度控制按 22,5° 一格调整

Manual control adjustable in steps of 22,5°

公差: 定位销孔 ± 0.02 , 螺纹孔 ± 0.1

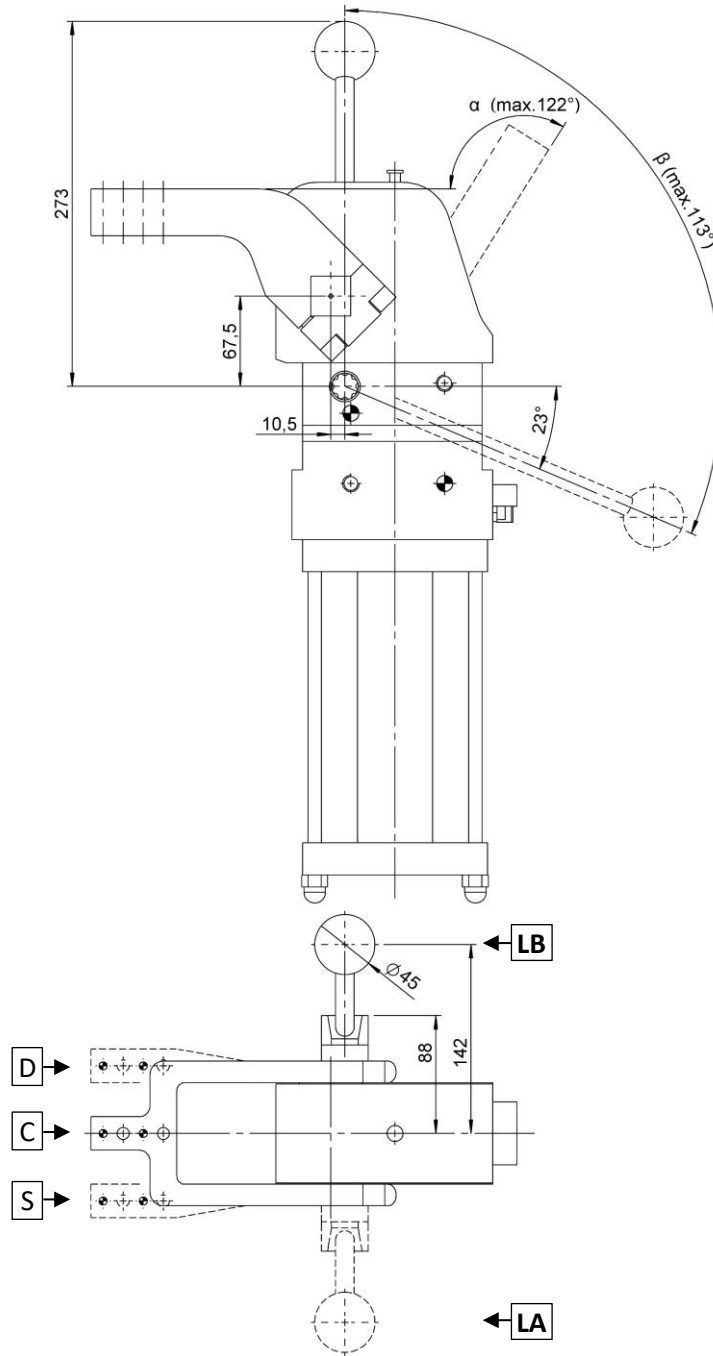
Tolerances: dowel holes ± 0.02 , screw holes ± 0.1

类型 Type	缸径 Cylinder bore	保持力 Holding moment	重量 Weight	工作气压 Working pressure	最大手动推力 Max. manual force
	[mm]	[Nm]	[Kg]	[bar]	[N]
CPLM80L...H1...S	80	2500	~ 16	4 - 8	200



CPLM80L...V3...

夹紧气缸, D.80, 打开角度可调, 带手动机构, 夹臂垂直安装, 高度 45
Clamp, D.80, Vario Op. Angle, Hand Lever, Vert. arm, Offset 45



α	16°	29°	43°	58°	77°	90°	107°	122°
β	37°	46°	55°	64°	76°	86°	100°	113°

手柄角度控制按 22,5° 一格调整

Manual control adjustable in steps of 22,5°

公差: 定位销孔 ± 0.02 , 螺纹孔 ± 0.1

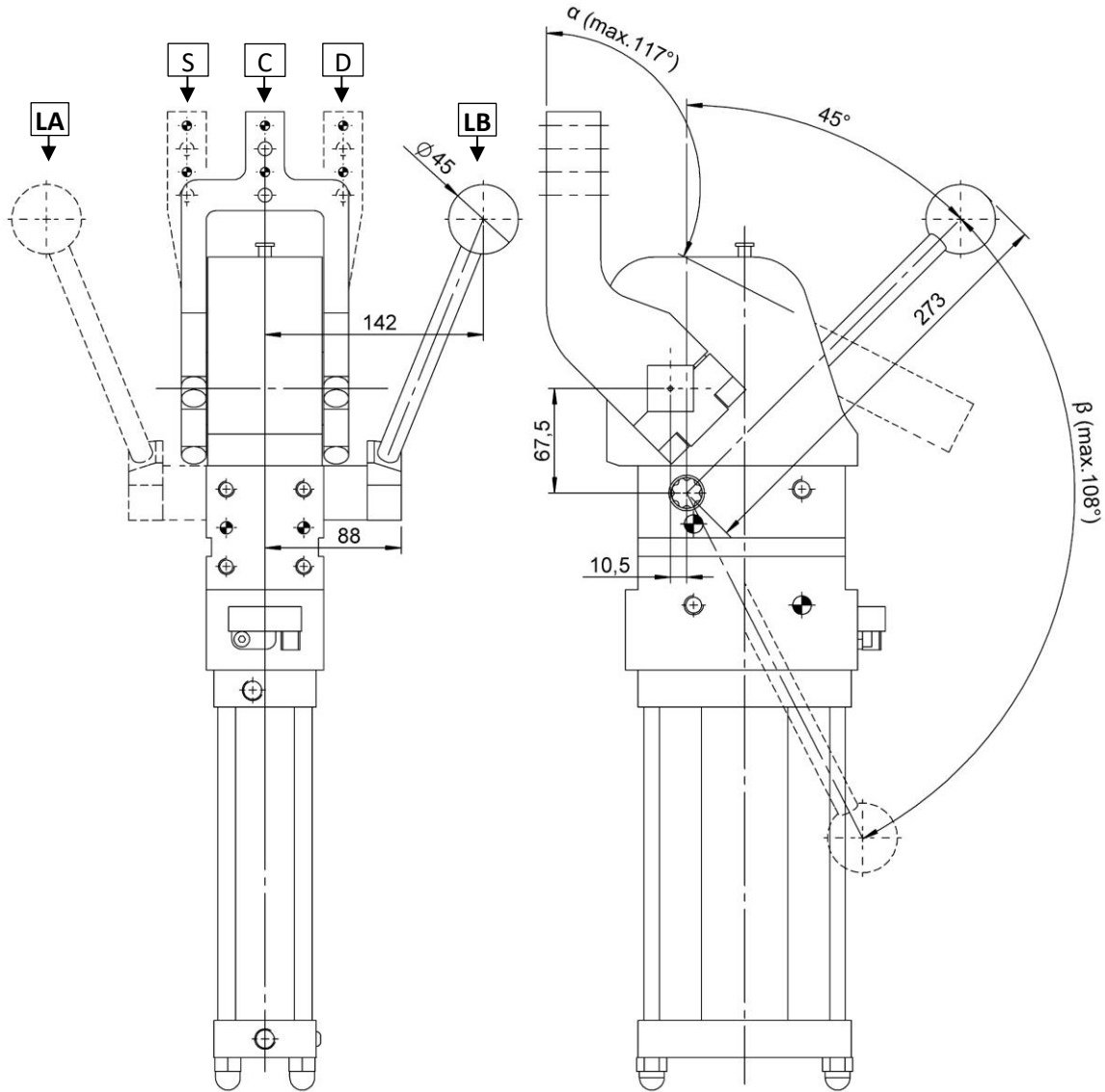
Tolerances: dowel holes ± 0.02 , screw holes ± 0.1

类型 Type	缸径 Cylinder bore	保持力 Holding moment	重量 Weight	工作气压 Working pressure	最大手动推力 Max. manual force
	[mm]	[Nm]	[Kg]	[bar]	[N]
CPLM80L...V3...	80	2500	~ 16,5	4 – 8	200



CPLM80L...H3...

夹紧气缸, D.80, 打开角度可调, 带手动机构, 夹臂水平安装., 高度 45
Clamp, D.80, Vario Op. Angle, Hand Lever, Horiz. Arm, Offset 45



α	16°	29°	43°	58°	77°	90°	107°	117°
β	37°	46°	55°	64°	76°	86°	100°	108°

手柄角度控制按 22,5° 一格调整

Manual control adjustable in steps of 22,5°

公差: 定位销孔 ± 0.02 , 螺纹孔 ± 0.1

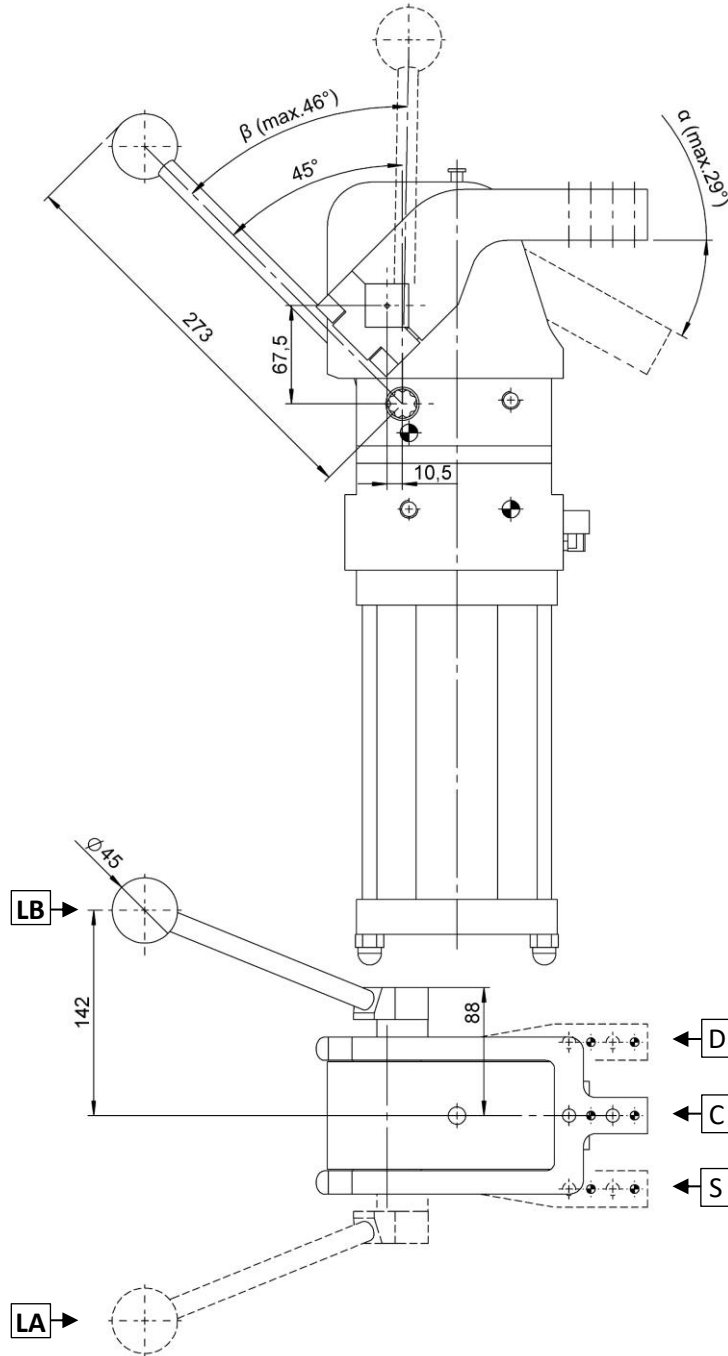
Tolerances: dowel holes ± 0.02 , screw holes ± 0.1

类型 Type	缸径 Cylinder bore	保持力 Holding moment	重量 Weight	工作气压 Working pressure	最大手动推力 Max. manual force
	[mm]	[Nm]	[Kg]	[bar]	[N]
CPLM80L...H3...	80	2500	~ 16,5	4 - 8	200



CPLM80L...V3...S

夹紧气缸, D.80, 打开角度可调, 带手动机构, 夹臂垂直对称安装., 高度 45
Clamp, D.80, Vario Op. Angle, Hand Lever, Vert. Sym., Offset 45



α	16°	29°
β	37°	46°

手柄角度控制按 22,5° 一格调整

Manual control adjustable in steps of 22,5°

公差: 定位销孔 ± 0.02 , 螺纹孔 ± 0.1

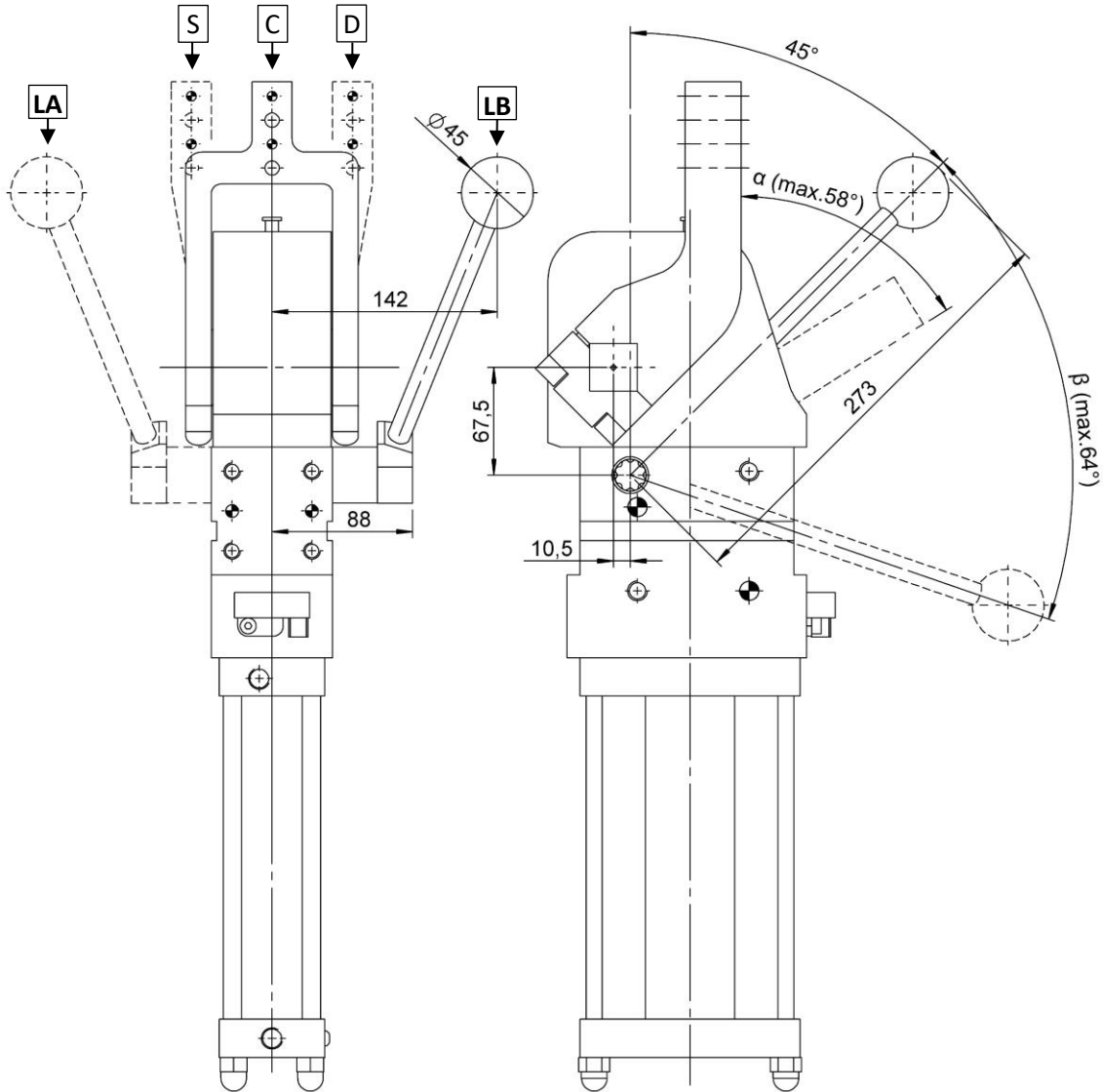
Tolerances: dowel holes ± 0.02 , screw holes ± 0.1

类型 Type	缸径 Cylinder bore	保持力 Holding moment	重量 Weight	工作气压 Working pressure	最大手动推力 Max. manual force
	[mm]	[Nm]	[Kg]	[bar]	[N]
CPLM50L...V3...S	80	2500	~ 16,5	4 – 8	200



CPLM80L...H3...S

夹紧气缸, D.80, 打开角度可调, 带手动机构, 夹臂水平对称安装, 高度 45
Clamp, D.80, Vario Op. Angle, Hand Lever, Horiz. Sym., Offset 45



α	16°	29°	43°	58°
β	37°	46°	55°	64°

手柄角度控制按 22,5° 一格调整

Manual control adjustable in steps of 22,5°

公差: 定位销孔 ± 0.02 , 螺纹孔 ± 0.1

Tolerances: dowel holes ± 0.02 , screw holes ± 0.1

类型 Type	缸径 Cylinder bore	保持力 Holding moment	重量 Weight	工作气压 Working pressure	最大手动推力 Max. manual force
	[mm]	[Nm]	[Kg]	[bar]	[N]
CPLM80L...H3...S	80	2500	~ 16,5	4 – 8	200

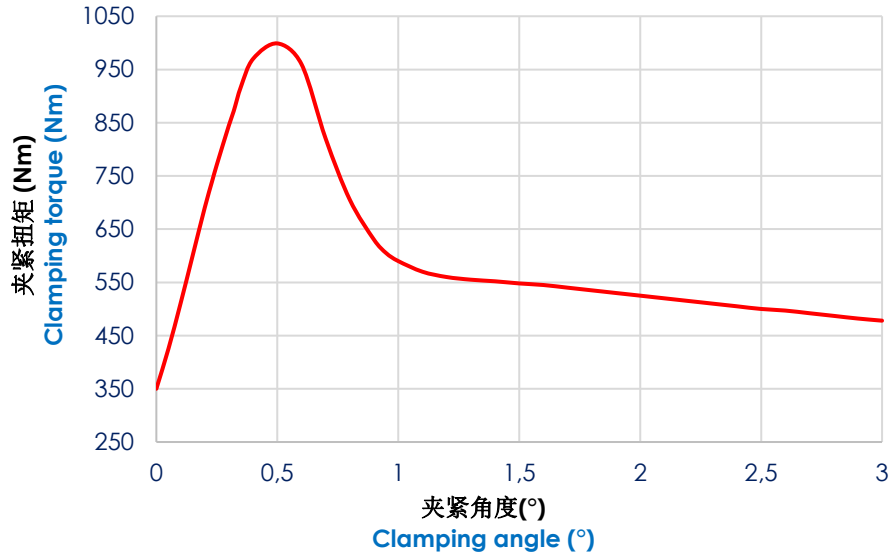


图表 CPL80.

Diagrams CPL80.

夹紧扭矩 (Nm)

Clamping torque (Nm)

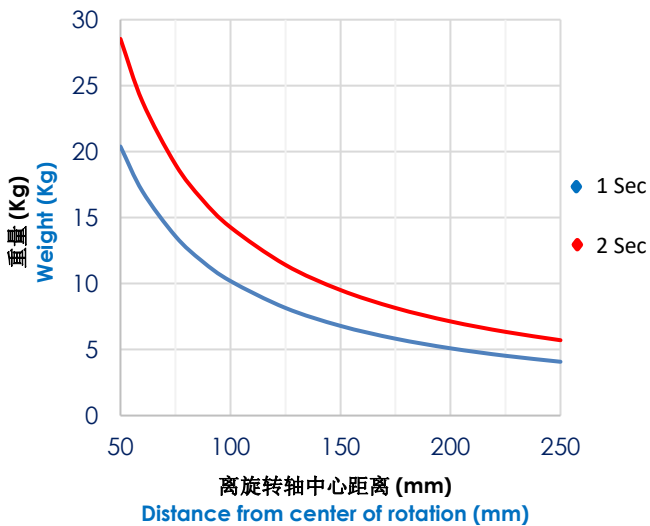


最大夹紧力矩(5 bar): **1000 Nm.**

Max. clamping torque (5 bar): **1000 Nm.**

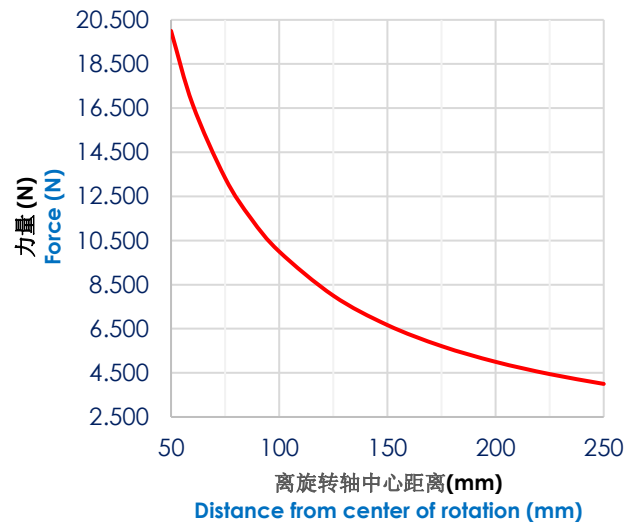
最大夹臂承受负载 5bar (Kg).

Max. load applicable on the arm (Kg) at 5 bar.



最大承受力 5 bar (N).

Max. force applied (N) at 5 bar.



型号 Type	最大重量力矩 Max. torque By weight [Nm]		最大偏心力矩 The max torque for applications with the load out of axis [Nm]	
	1 sec	2 sec	1 sec	2 sec
CPL 80	10	14	7,5	10,5



M12 电感式接近开关原理图 (cod. 09960/L/C).

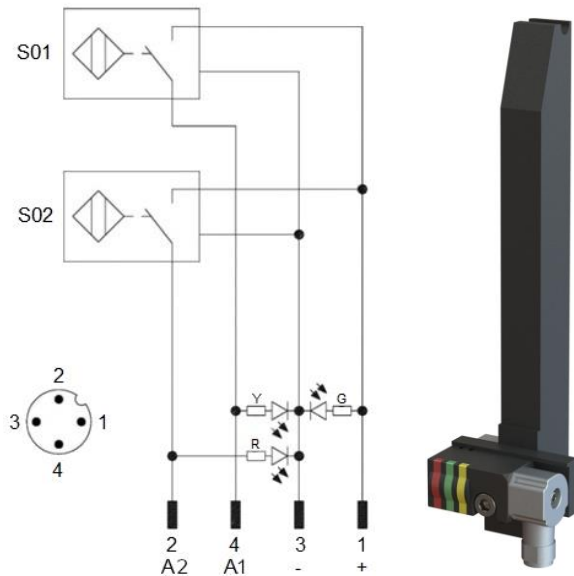
Diagram for M12 inductive proximity switch (cod. 09960/L/C).

技术参数:

- 输出类型: PNP;
- 输入电压: 10-30 VDC;
- 最大换向电流: 150 mA;
- 耗电电流: < 20 mA;
- 电压差: < 1,8 V
- 工作温度: -25° / 70° C.

Technical data:

- Output type: PNP;
- Feeding voltage: 10-30 VDC;
- Max. commutating current: 150 mA;
- Power supply: < 20 mA;
- Voltage drop: < 1,8 V;
- Temperature range: -25° / 70° C.



S01 = 打开信号

S01 = opening signal

S02 = 关闭信号

S02 = closing signal

Y = 黄色 LED / yellow LED

G = 绿色 LED / green LED

R = 红色 LED / red LED

1 = 棕色线 / brown wire

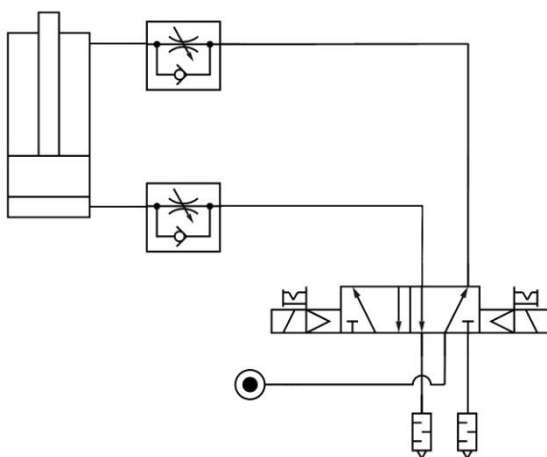
2 = 黑色线 / black wire

3 = 蓝色线 / blue wire

4 = 白色线 / white wire

气路图.

Pneumatic plan.



cilindro pneumatico pneumatic cylinder	pos. chiusura closed pos.						
	pos. apertura open pos.						
segnale pos. apertura open pos. signal	1						
	0						
segnale pos. chiusura closed pos. signal	1						
	0						



操作说明.

Operating instructions.

调整打开角度.

- 让夹臂处于打开状态，松开固定传感器的 M6 螺丝; (图 1)
- 按照以下一个方式调整打开角度:
 - 1) 用长度最短 40mm 的 M6 螺丝插入齿形联结轴，拧紧 (绕 4 圈)直至系统松开; (图 2)
 - 2) 插入最大 \varnothing 5mm 的六角扳手，推压弹簧，施力 ≥ 200 N; (图 3)
- 保持压住弹簧的状态，手动移动夹臂位置到需要的角度;
- 释放弹簧让组件自动耦合.
- 按照上述程序反顺序重新安装.

Opening angle change.

- Bring the clamp arm in the opening position and unscrew the M6 bolt that fixes the sensor; (pic 1)
- Follow one of the following methods to change the opening angle:
 - 1) Bring a M6 screw of min.40mm in contact with the toothed coupling and screw it until the system is released (~4 turns); (pic 2)
 - 2) Put a key with \varnothing max.5 mm into the hole, and push the spring applying a force ≥ 200 N; (pic 3)
- Keep pushing on the spring and move the clamp arm manually to the desired position.
- Release the spring to allow the automatic coupling of the components.
- for assembly follow the procedure described above in reverse order.

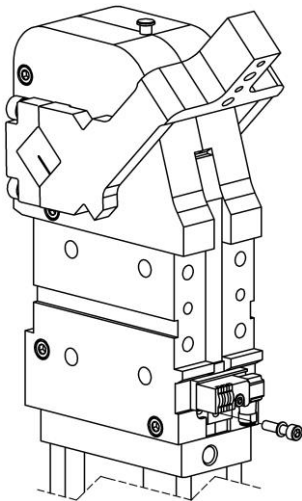


图 1
Pic 1

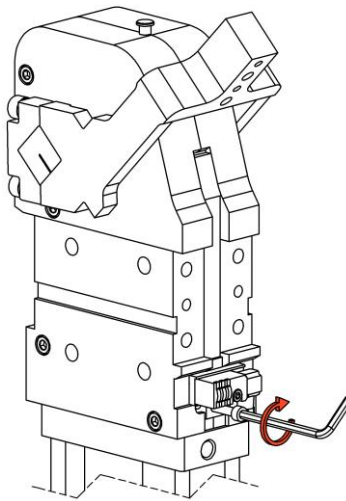


图 2
Pic 2

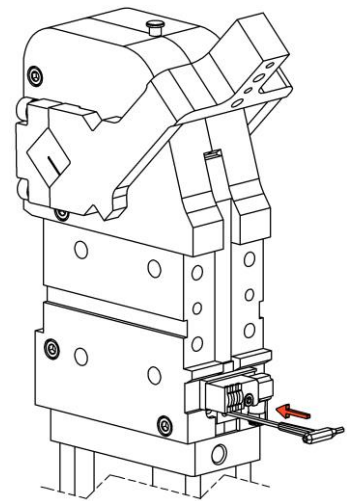


图 3
Pic 3

打开角度.

Opening angles.

型号 Type	打开角度 / Opening angles																														
	3	5	7	10	13	16	20	24	29	33	38	43	48	53	58	63	68	72	77	81	86	90	95	99	103	107	112	117	122	127	135
CPL...V1 CPL...V3	•	•	•	•	•	•	•	•	•	•	•	•	•	•	•	•	•	•	•	•	•	•	•	•	•	•	•	•	•	•	•
CPL...H1	•	•	•	•	•	•	•	•	•	•	•	•	•	•	•	•	•	•	•	•	•	•	•	•	•	•	•	•	•	•	•
CPL...H3	•	•	•	•	•	•	•	•	•	•	•	•	•	•	•	•	•	•	•	•	•	•	•	•	•	•	•	•	•	•	•
CPL...V1...S	•	•	•	•	•																										
CPLV3...S	•	•	•	•	•	•	•	•																							
CPL...H1...S	•	•	•	•	•	•	•	•	•	•	•	•	•	•	•	•	•	•	•	•	•	•	•	•	•	•	•	•	•	•	•
CPL...H3...S	•	•	•	•	•	•	•	•	•	•	•	•	•	•	•	•	•	•	•	•	•	•	•	•	•	•	•	•	•	•	•



型号 Type	打开角度 / Opening angles																												
	3	5	7	10	13	16	20	24	29	33	38	43	48	53	58	63	68	72	77	81	86	90	95	99	103	107	112	117	122
CPLM...V1 CPLM...V3	•	•	•	•	•	•	•	•	•	•	•	•	•	•	•	•	•	•	•	•	•	•	•	•	•	•	•	•	•
CPLM...H1	•	•	•	•	•	•	•	•	•	•	•	•	•	•	•	•	•	•	•	•	•	•	•	•	•	•	•	•	•
CPLM...H3	•	•	•	•	•	•	•	•	•	•	•	•	•	•	•	•	•	•	•	•	•	•	•	•	•	•	•	•	•
CPLM...V1...S	•	•	•	•	•	•	•	•	•	•	•	•	•	•	•	•	•	•	•	•	•	•	•	•	•	•	•	•	•
CPLM...V3...S	•	•	•	•	•	•	•	•	•	•	•	•	•	•	•	•	•	•	•	•	•	•	•	•	•	•	•	•	•
CPLM...H1...S	•	•	•	•	•	•	•	•	•	•	•	•	•	•	•	•	•	•	•	•	•	•	•	•	•	•	•	•	•
CPLM...H3...S	•	•	•	•	•	•	•	•	•	•	•	•	•	•	•	•	•	•	•	•	•	•	•	•	•	•	•	•	•

备件.

Spare parts.

配套元件 # Kit	图片 Picture	描述 Description	代号 Article
夹臂总成 Arm assembly		夹臂 V1C / H1C / V1CS / H1CS Arm V1C / H1C / V1CS / H1CS	06635/C
		夹臂 V1D / H1S / V1SS / H1DS Arm V1D / H1S / V1SS / H1DS	06656/DX/C
		夹臂 V1S / H1D / V1DS / H1SS Arm V1S / H1D / V1DS / H1SS	06656/SX/C
		夹臂 V1CDS 和 O1CDS Arm type V1CDS and O1CDS	06656/CDS/C
		夹臂 V3C / H3C / V3CS / H3CS Arm V3C / H3C / V3CS / H3CS	10029/C
		夹臂 V3D / H3S / V3SS / H3DS Arm V3D / H3S / V3SS / H3DS	10029/DX/C
		夹臂 V3S / H3D / V3DS / H3SS Arm V3S / H3D / V3DS / H3SS	10029/SX/C
接近开关 Proximity switch		VEP 完整电感式接近开关(0°-90°) Inductive proximity switch VEP (0°-90°)	09960/L/C
密封套装 Seals kit		用于气缸的密封组件 Seal components for pneumatic cylinder	SCR-CPL80

